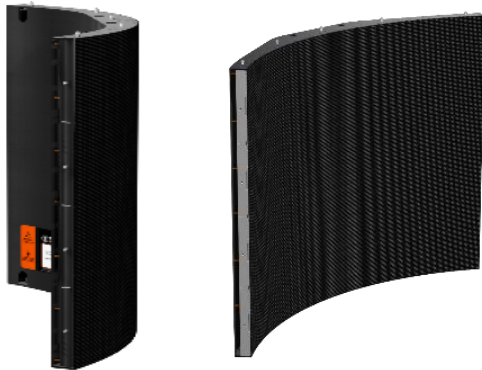


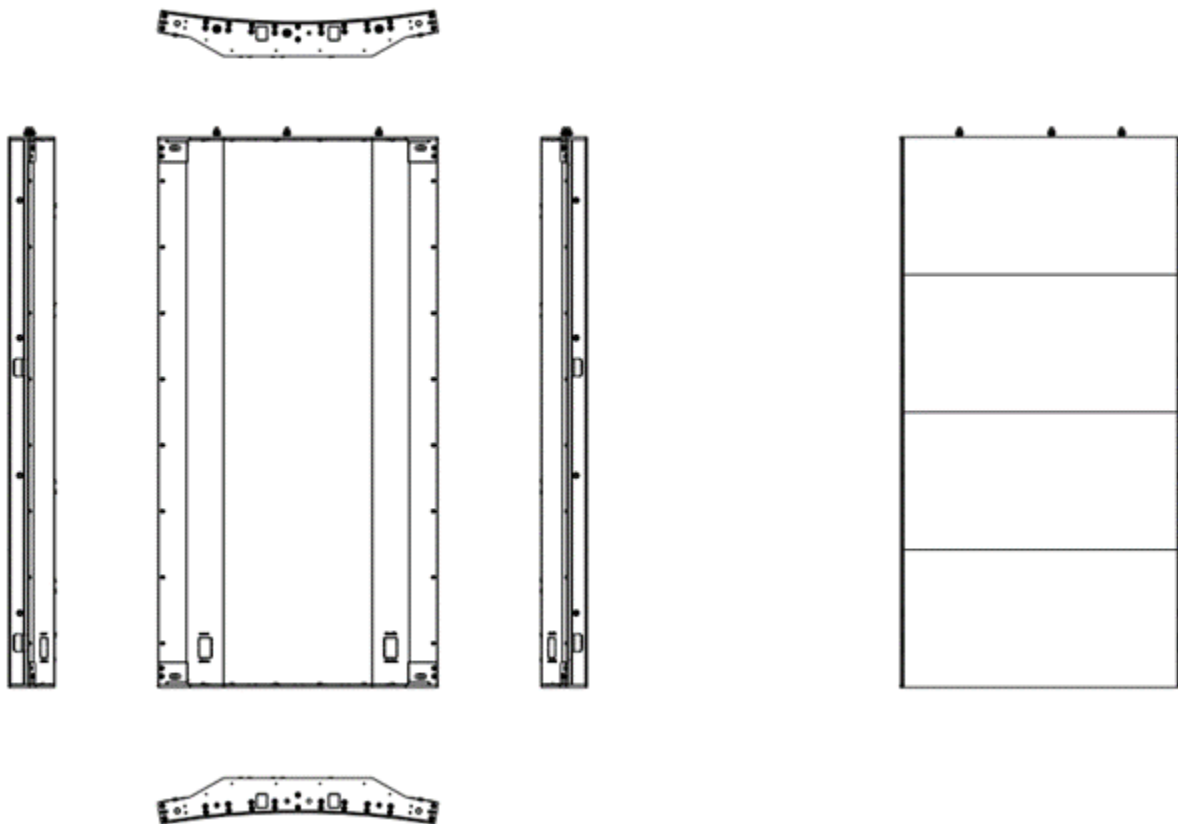
# UHF

## Flexible LED Display Solution



### Product features:

1. Perfect arc, perfectly integrated with the environment
2. Flexible shape, born for creative application
3. Modules protected by memory metal chassis, high precision, good radian uniformity
4. Front installation and front maintenance



## Main Technical Specifications:

Parameter	Value
Pixel Pitch	2.5mm
LED Type	SMD 1515
Brightness	800cd/m <sup>2</sup>
Pixel Density	155,817pixels /m <sup>2</sup>
Pixels Per Panel	200x200/400 pixels
Module Size	500x250mm
Panel Size	500x500/1000mm
Weight	22~28kg/m <sup>2</sup>
Maintenance	Front
Ingress Protection	IP40
Curve	Customized according to customers' needs
Planeness	≤0.3mm
Recommended Viewing Distance	≥2.5m
Environment	Indoor
Material	Aluminum
Calibration	Support brightness and chroma
Color Temperature	2,000K-9,500K Adjustable
Horizontal Viewing Angle	150°
Vertical Viewing Angle	150°
Contrast Ratio	3000:1
Input Power <Max>	300W/m <sup>2</sup> with ±10% tolerance
Input Power <Typical>	100W/m <sup>2</sup> with ±10% tolerance
Input Voltage	100~240 VAC
Processing Depth	14bit
Refresh Rate	3840Hz
Video Frame Rate	60Hz
Input Power Frequency	50~60 Hz
LED Life Time	100,000 Hours
Operating Temperature/Humidity	-10℃~+45℃/10~80%RH
Storage Temperature/Humidity	-20℃~+55℃/10~85%RH
Standard Mounting Configuration	Fixed/Hanging
Optional Mounting Configuration	Concave and Convex

**Note:**1.Product pictures are for illustration only, the actual product effects (including but not limited to appearance, color, size) may be slightly different, please refer to the actual product.

2.The specification parameters are reference values. Part of the data comes from Unilumin's internal laboratory and is obtained under a specific test environment. In actual use, it may be slightly different due to product batch differences, configuration differences, software versions, use conditions and environmental factors. Actual usage shall prevail.