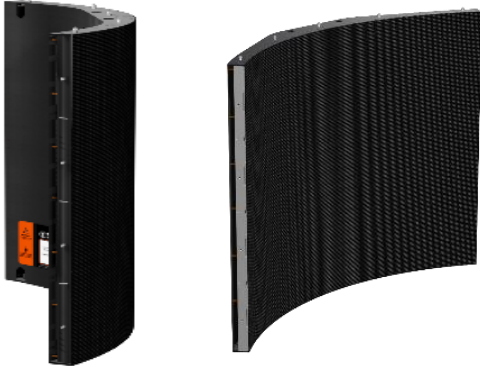


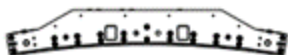
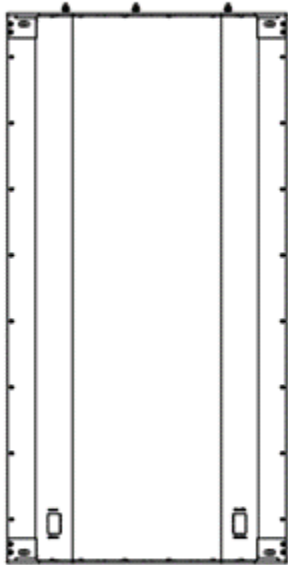
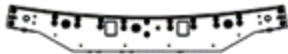
UHF

Flexible LED Display Solution



Product features:

1. Perfect arc, perfectly integrated with the environment
2. Flexible shape, born for creative application
3. Modules protected by memory metal chassis, high precision, good radian uniformity
4. Front installation and front maintenance



Main Technical Specifications:

Parameter	Value
Pixel Pitch	1.85mm
LED Type	SMD 1515
Brightness	800cd/m ²
Pixel Density	291,600pixels /m ²
Pixels Per Panel	270x270/540pixels
Module Size	500mmx250mm
Panel Size	500mmx500/1000mm
Weight	22~28kg/m ²
Maintenance	Front
Ingress Protection	IP40
Curve	Customized according to customers' needs
Planeness	≤0.2mm
Recommended Viewing Distance	≥1.8m
Environment	Indoor
Material	Aluminum
Calibration	Support brightness and chroma
Color Temperature	2,000K-9,300K Adjustable
Horizontal Viewing Angle	155°
Vertical Viewing Angle	155°
Contrast Ratio	5000:1
Input Power <Max>	300W/m ² with ±10% tolerance
Input Power <Typical>	100W/m ² with ±10% tolerance
Input Voltage	100~240 VAC
Processing Depth	14bit
Refresh Rate	3840 Hz
Video Frame Rate	60Hz
Input Power Frequency	50~60 Hz
LED Life Time	100,000 Hours
Operating Temperature/Humidity	-10℃~+45℃/10~80%RH
Storage Temperature/Humidity	-20℃~+55℃/10~85%RH
Standard Mounting Configuration	Fixed/Hanging
Optional Mounting Configuration	Concave and Convex

Note:

- 1.Product pictures are for illustration only, the actual product effects (including but not limited to appearance, color, size) may be slightly different, please refer to the actual product.
- 2.The specification parameters are reference values. Part of the data comes from Unilumin's internal laboratory and is obtained under a specific test environment. In actual use, it may be slightly different due to product batch differences, configuration differences, software versions, use conditions and environmental factors. Actual usage shall prevail.