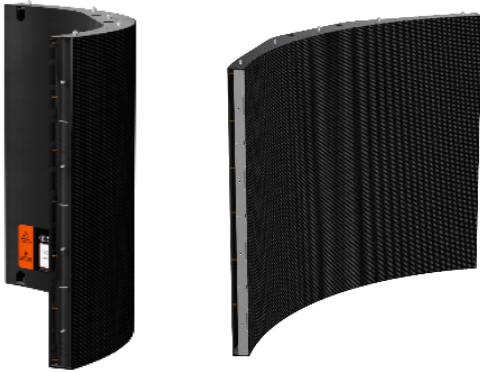


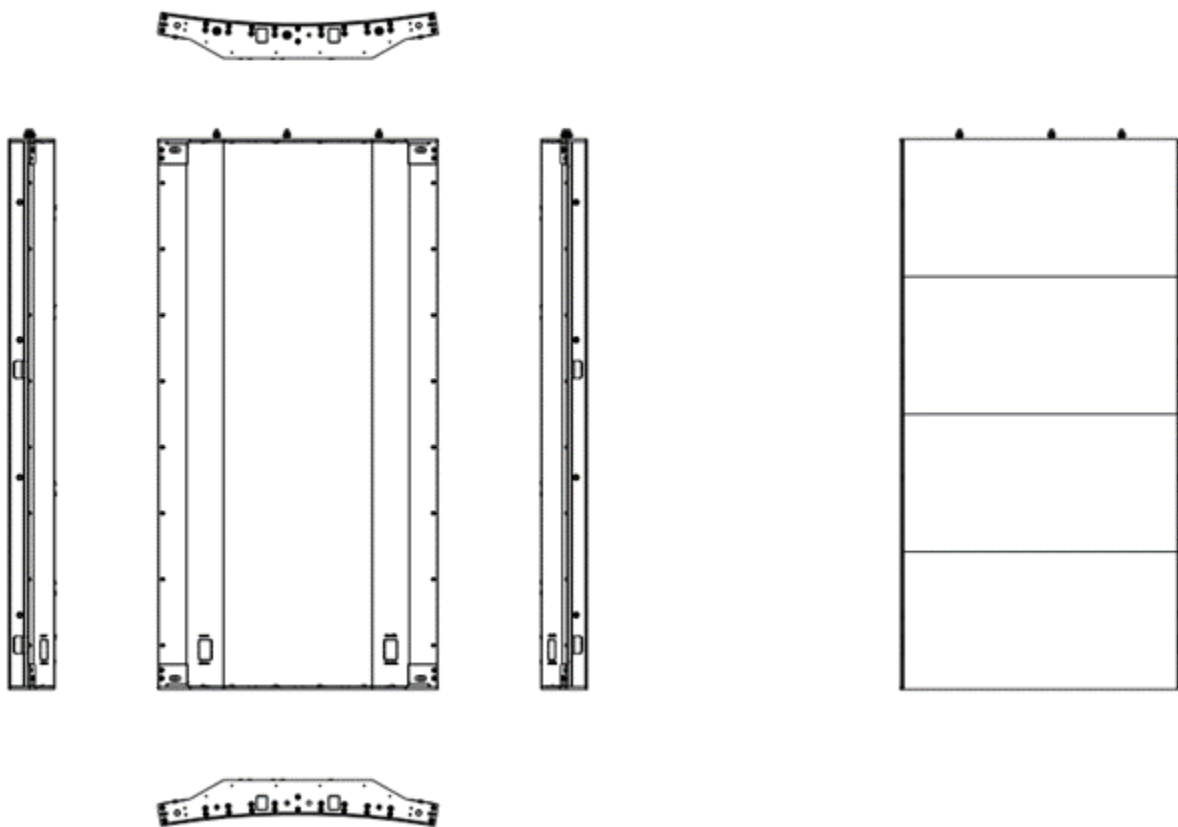
UHF

Flexible LED Display Solution



Product features:

1. Perfect arc, perfectly integrated with the environment
2. Flexible shape, born for creative application
3. Modules protected by memory metal chassis, high precision, good radian uniformity
4. Front installation and front maintenance



Main Technical Specifications:

| Parameter | Value |
|---------------------------------|--|
| Pixel Pitch | 1.56mm |
| LED Type | SMD 1010 |
| Brightness | 600cd/m ² |
| Pixel Density | 409,600pixels /m ² |
| Pixels Per Panel | 320x320/640pixels |
| Module Size | 500mmx250mm |
| Panel Size | 500mmx500/1000mm |
| Weight | 22~28kg/m ² |
| Maintenance | Front |
| Ingress Protection | Rear IP40 |
| Curve | Customized according to customers' needs |
| Planeness | ≤0.2mm |
| Recommended Viewing Distance | ≥1.5m |
| Environment | Indoor |
| Material | Aluminum |
| Calibration | Support brightness and chroma |
| Color Temperature | 2,000K-9,300K Adjustable |
| Horizontal Viewing Angle | 155° |
| Vertical Viewing Angle | 155° |
| Contrast Ratio | 5000:1 |
| Input Power <Max> | 500W/m ² with ±10% tolerance |
| Input Power <Typical> | 167W/m ² with ±10% tolerance |
| Input Voltage | 100~240 VAC |
| Processing Depth | 14bit |
| Refresh Rate | 3840 Hz |
| Video Frame Rate | 60Hz |
| Input Power Frequency | 50~60 Hz |
| LED Life Time | 100,000 Hours |
| Operating Temperature/Humidity | -10℃~+45℃/10~80%RH |
| Storage Temperature/Humidity | -20℃~+55℃/10~85%RH |
| Standard Mounting Configuration | Fixed/Hanging |
| Optional Mounting Configuration | Concave and Convex |

Note:

- 1.Product pictures are for illustration only, the actual product effects (including but not limited to appearance, color, size) may be slightly different, please refer to the actual product.
- 2.The specification parameters are reference values. Part of the data comes from Unilumin's internal laboratory and is obtained under a specific test environment. In actual use, it may be slightly different due to product batch differences, configuration differences, software versions, use conditions and environmental factors. Actual usage shall prevail.