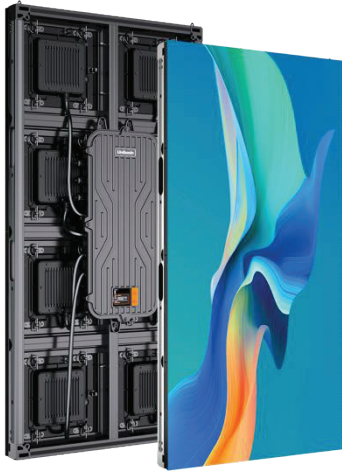
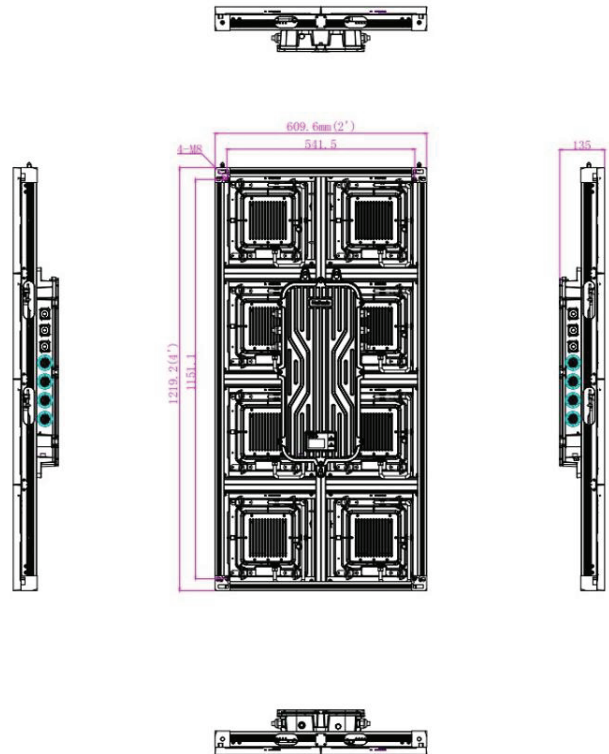
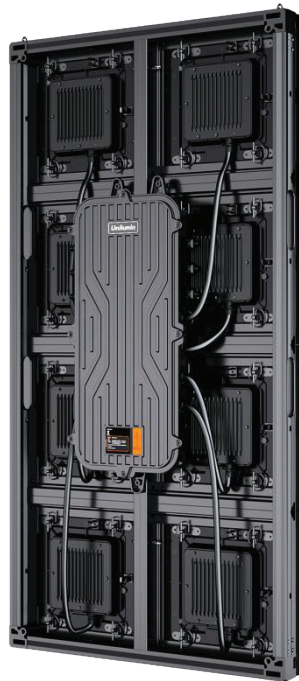
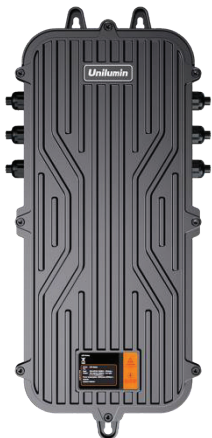
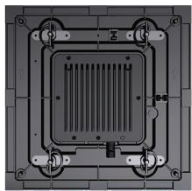


USIGN SERIES

Usign 1024 (Pixel Pitch 10, 2'x4')



- 8500nits, 7680Hz refresh rate
- 16bit grayscale
- IP65K level protection
- 100% front & rear servicability
- Power & signal 2-in-1 module cables for easy maintenance
- 1x1 module size is optimal for billboard applications



Specifications

Physical Parameters	LED Type	SMD 2727	Cabinet Material	Profile Aluminum
	Pixel Pitch	P10.16	Pixel Density	9688dots/m ²
	Module Size	1*1ft (304.8*304.8mm)	Module Resolution	30*30
	Cabinet Size	2*4ft (609.6*1219.2mm)	Cabinet Resolution	60*120
	Cabinet Weight	65Lbs (29.5kg)	Aspect Ratio	1:2

Optical Parameters	Brightness	8500nits	Contrast Ratio	15000:1
	Color Temperature	2000-9300K	Bit Depth	16bit
	Refresh Rate	7680Hz	Viewing Angle	H160°/V90°
	Driving Type	1/2 Scan	Input Voltage	100-240V AC
	Maximum Power	393W/Cabinet	Average Power	131W/Cabinet

Other Parameters	Maintenance	100% Front/Rear	Ingress Protection	IP69K
	Using Environment	Outdoor	Installation	Fixed
	Certification	ETL Listed/FCC/ISED In Progress	LED Lifetime	100,000H
	Operation Temperature	-4°F~122°F (-20°C~+50°C)	Storage Temperature	-22°F~+140°F (-30~+60°C)
	Operation Humidity	10~90%RH	Storage Humidity	10~80%RH

Notes:

1. Specifications are subject to change.
2. Product power may vary +/- 15%.